



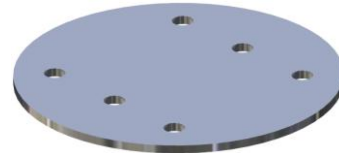
## Mu Metal Deep-Drawn Circular Cans With Outside or Inside Fitting Lid



Can Ref	Outside or Inside Flanged Lid	Internal Dimensions				Nominal Thickness	
		Diameter		Depth		MM	IN
		MM	IN	MM	IN		
SDE	O or I	30.2	1.19	47.0	1.85	0.8	0.032
SDI	O or I	30.2	1.19	41.3	1.62	0.8	0.032
SC	O or I	30.2	1.19	34.9	1.37	0.8	0.032
SB	O or I	30.2	1.19	28.6	1.13	0.8	0.032
SBS	O or I	30.2	1.19	20.8	0.82	0.8	0.032
CC	O Only	33.3	1.31	27.0	1.06	0.8	0.032
SM	O or I	24.4	0.96	19.3	0.76	0.8	0.032
ST	O Only	19.0	0.75	19.0	0.75	0.8	0.032
1802	O Only	39.0	1.54	52.0	2.05	0.8	0.032
DC01	-	48.9	1.95	39.0	1.54	0.8	0.032
DC02	O Only	59.0	2.32	65.0	2.56	0.8	0.032
DC03	O Only	88.0	3.46	44.0	1.73	0.5	0.020



Flanged Lid



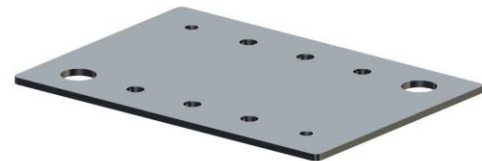
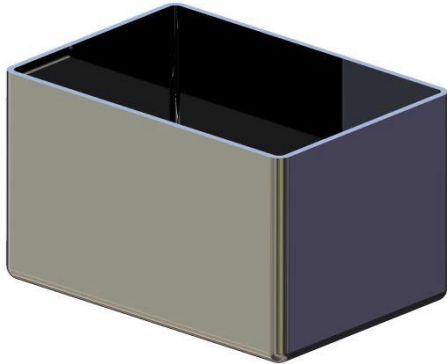
Flat Lid

1. Tolerances +/- 0.25mm (0.010")
2. These cans are our current range, however, we are constantly extending our range and it may be possible to manufacture your particular requirements from our standard tooling.
3. Piercing/drilling of holes and cutouts can be made as required.
4. Height of can could be adjusted - Please contact Magnetic Shields for MAX/MIN height range



## Mu Metal Deep-Drawn Rectangular Cans

Can Ref	Internal Dimensions						Nominal Thickness	
	Length		Width		Depth			
	MM	IN	MM	IN	MM	IN	MM	IN
SRS	41.3	1.63	28.6	1.13	24.6	0.97	0.8	0.032
V2.1	34.6	1.36	28.2	1.11	24.2	0.95	0.5	0.020
V1.2	28.2	1.11	23.2	0.91	22.5	0.88	0.5	0.020
SRB	22.9	0.90	17.0	0.67	17.8	0.70	1.0	0.039
SRMC*	17.30	0.68	13.30	0.52	12.70	0.50	0.5	0.020



Flat Lid

1. Tolerances +/- 0.25mm (0.010")
2. These cans are our current range, however, we are constantly extending our range and it may be possible to manufacture your particular requirements from our standard tooling.
3. Piercing/drilling of holes and cutouts can be made as required.
4. Height of can could be adjusted - Please contact Magnetic Shields for MAX/MIN height range

\* Flanged lid available